

Earthquake Impact - Shakemap - 26 October 2015

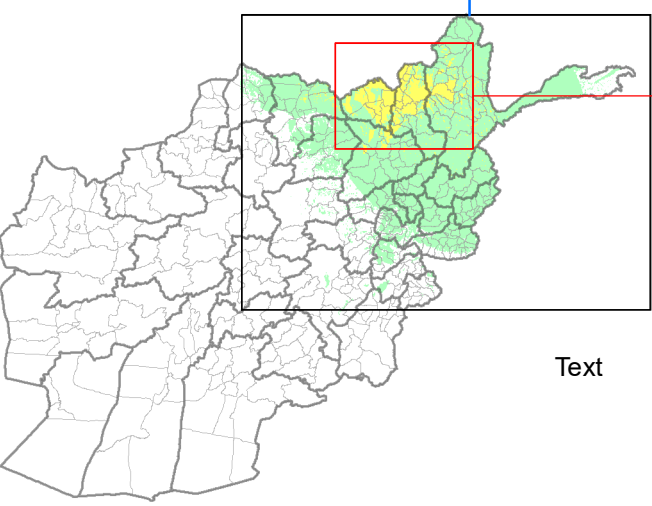
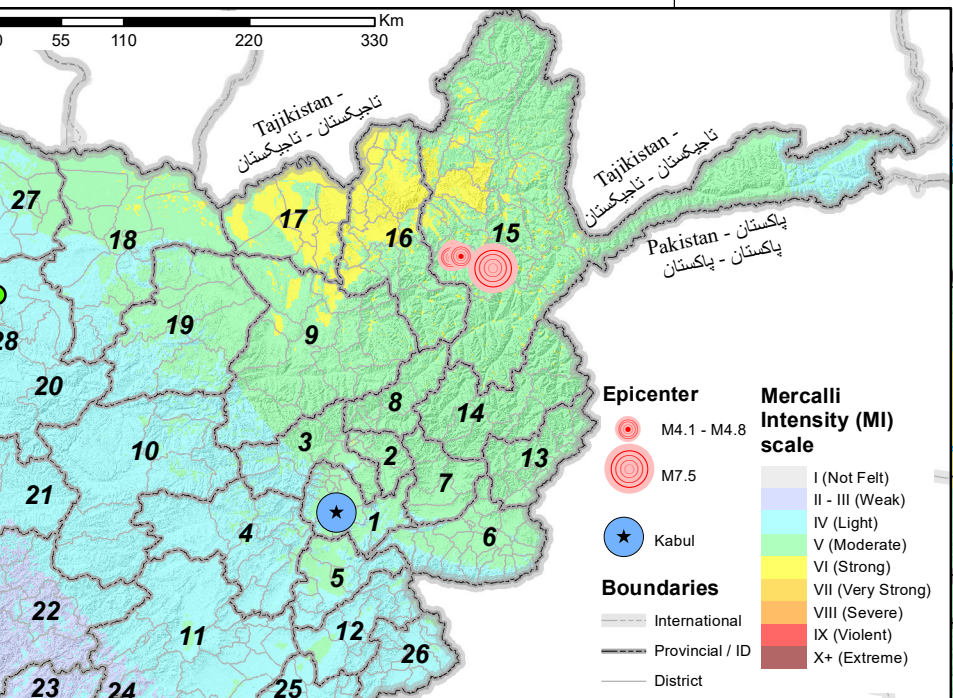
M7.5 - 45km N of `Alaqahdari-ye Kiran wa Munjan, Afghanistan



Province	ID	Population (in ths)				Settlements				Area (in km ²)			
		II-III	IV	V	VI	II-III	IV	V	VI	II-III	IV	V	VI
Badakhshan	15		3	599	494		18	1,475	715		3,644	35,474	4,334
Baghlan	9		17	792	243		65	1,121	344		1,571	15,201	1,032
Balkh	18		228	1,292	2		565	696	2		5,347	10,995	426
Bamyan	10		480	39			1,819	63			17,141	752	
Daykundi	22	241	216			1,041	962			9,015	4,794		
Ghazni	11	64	1,323	5		245	3,092	5		2,141	18,028	336	
Ghor	21	7	164			23	583			231	5,722		
Jawzjan	27		251	230			182	196			3,661	3,189	
Kabul	1		79	4,803			155	863			1,516	3,139	
Kandahar	33	7				29					605		
Kapisa	2			501	9			620	11			1,876	6
Khost	26		622	43			948	78			4,117	166	
Kunar	13			520				1,047				4,845	3
Kunduz	17			43	1,115			63	809			2,842	5,060
Laghman	7		1	518			10	661			125	3,710	
Logar	5		181	273			314	458			2,723	1,672	
Nangarhar	6		85	1,664			271	1,266			2,214	5,159	
Nuristan	14			165				269	1			8,908	78
Paktika	25		458	6			1,148	11		23	10,271	70	
Paktya	12		465	175			676	173			4,779	496	
Panjsher	8			177	1			323	1			3,690	40
Parwan	3		76	695			251	770			2,274	3,315	1
Samangan	19		82	367			235	496			4,180	8,732	
Sar-e-Pul	20			597			861				13,307	14	
Takhar	16			185	955			383	878			6,438	5,880
Uruzgan	23	208	55			372	96			6,815	707		
Wardak	4		566	123			1,860	271			9,956	623	
Zabul	24		66	92			217	296			3,129	1,943	
Total		592	6,042	13,217	2,819	1,927	14,407	11,308	2,761	21,959	118,161	121,642	16,860

Mercalli Intensity (MI)	Shaking	Earthquake impact				
		No provinces	No districts	No settlements	Population (in ths)	Area (in km ²)
I	Not Felt	7	32	1,927	590	21,959
II-III	Weak	24	181	14,407	6,040	118,163
IV	Light	23	235	11,308	13,220	121,643
V	Moderate	10	87	2,761	2,820	16,858
VI	Strong					
VII	Very Strong					
VIII	Severe					
IX	Violent					
X+	Extreme					

- Settlements**
 - Capital (Blue star)
 - Provincial capital (Blue circle)
 - Hamlet (Small black dot)
 - Village (Medium black dot)
 - Town (Large black dot)
 - Larger Town (Large black dot)
 - City (Large black dot)
 - Large City (Large black dot)
- Transportation**
 - Transportation (Red line)
 - Main road (Orange line)
 - Airports (Blue airplane icon)
- Boundaries**
 - International (Dashed grey line)
 - Provincial (Dashed grey line)
 - District (Dashed grey line)
 - Lakes/Wetlands (Blue area)
- Epicenter**
 - M4.1 - M4.8 (Red concentric circles)
 - M7.5 (Large red concentric circles)



Series: Earthquake
 Map: DRR-EQ-01-R4-0001
 Version: 1.0 Date: 27/10/2015
 Author: iMMAP - E. Hagen

This map is compiled by iMMAP. Datum/Projection: WGS84/Geographic. iMMAP in Afghanistan is funded by The United States Agency for International Development (USAID)/ Office of U.S. Foreign Disaster Assistance (OFDA). The data, boundaries and names and the designations used on this map do not imply official endorsement or acceptance by iMMAP or USAID/OFDA. Sources: USGS National Earthquake Information Center (2015). iMMAP LandCover-Settlement-Population (2015), ORNL Landscan (2013), FAO Landcover (2012). All information is the best available at the time this map was produced. For copies or information regarding specific data sources and methodology: Afghanistan@immap.org.