

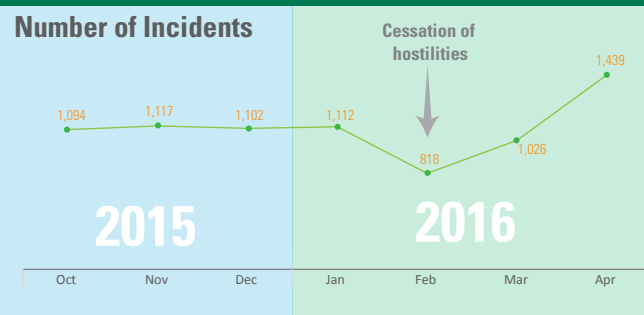
Conflict, Cropland and Food prices

Syrian Arab Republic

May 2016



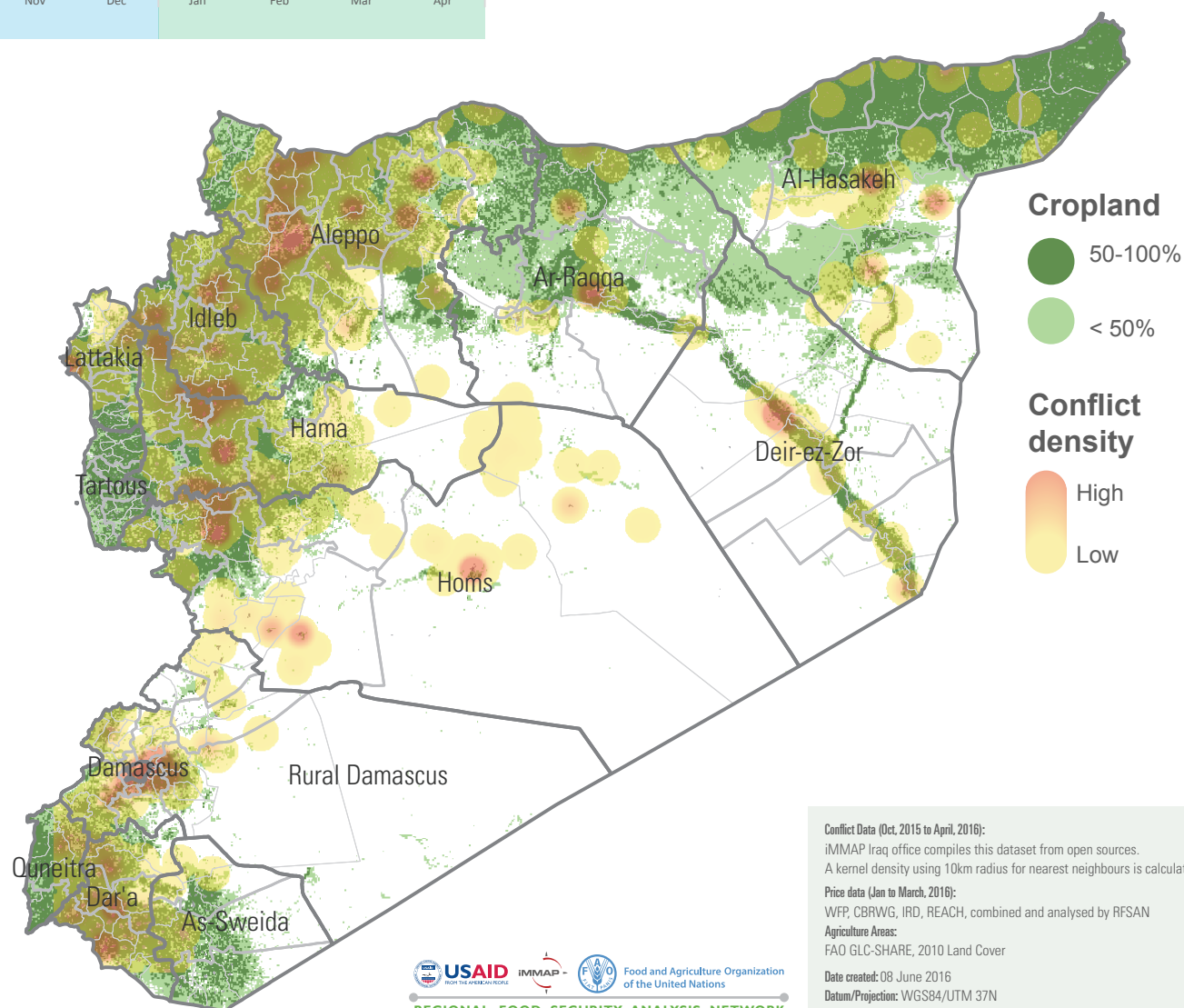
Number of Incidents



Analysis

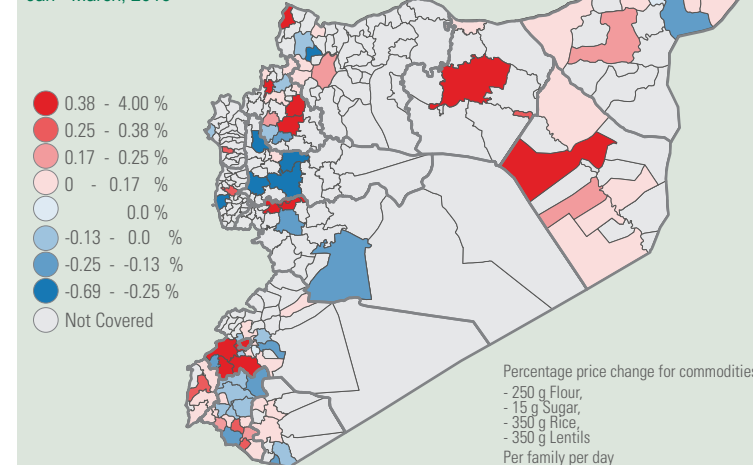
The conflict maps shows the density of security incidents observed between October 2015 and April, 2016 (with over 8,000 events recorded). The number of incidents briefly dropped in February 2016, before rising again in March and April. Most of the incidents were observed in Homs, Hama, Idlib and Aleppo; Rural Damascus (just outside Damascus); and the southern Governorates of Dara, Quneitra and As-Sweida. Incidents were also observed in the urban areas of Ar-Raqqa, Deir-ez-Zour and Al-Hasakeh.

The conflict density map is overlaid with cropland areas, where also most of the built-up urban and



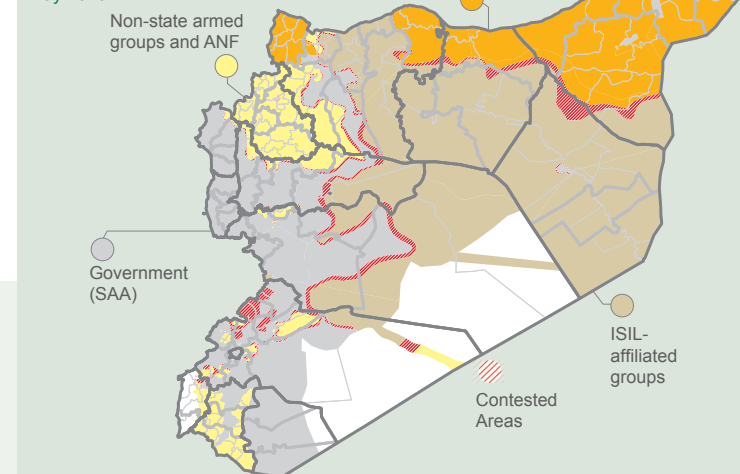
Food Price Changes

Jan - March, 2016



Areas of influence

May 2016



Conflict Data (Oct. 2015 to April, 2016):

IMMAP Iraq office compiles this dataset from open sources. A kernel density using 10km radius for nearest neighbours is calculated.

Price data (Jan to March, 2016):

WFP, CBRWG, IRD, REACH, combined and analysed by RFSAN

Agriculture Areas:

FAO GLC-SHARE, 2010 Land Cover

Date created: 08 June 2016

Datum/Projection: WGS84/UTM 37N