



iMMAP ▶

CATALOGUE OF SERVICES

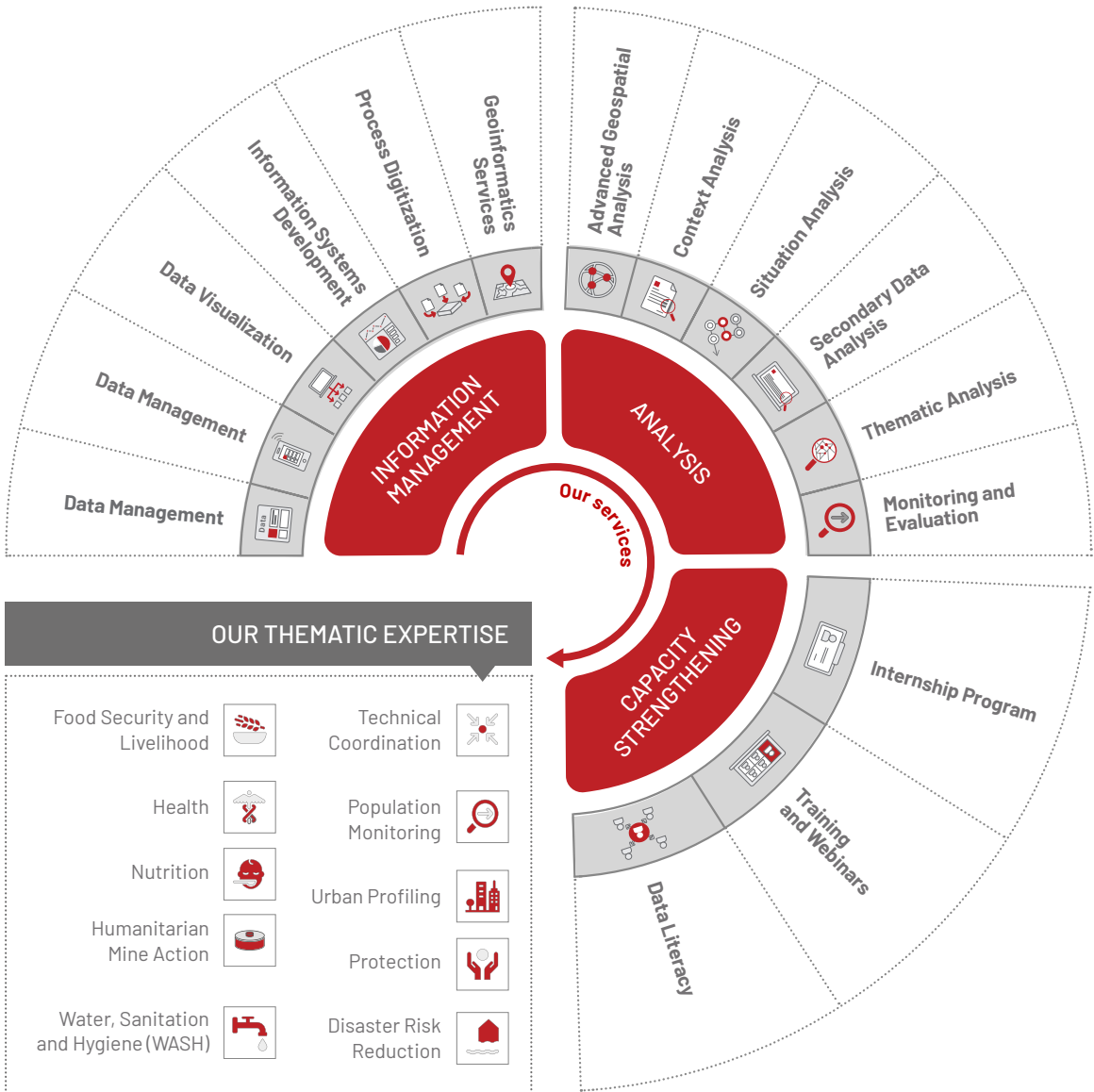


About iMMAP Inc.

iMMAP Inc. is an international nonprofit organization that provides information management and analysis services to humanitarian and development stakeholders, enabling partners to make informed decisions that ultimately provide high-quality targeted assistance to the world's most vulnerable populations.

Our core philosophy is that better data leads to better decisions and better decisions lead to better outcomes. iMMAP Inc.'s critical support to information value chains helps to solve operational and strategic challenges of our partners in emergency and development contexts by creating knowledge that enables evidence-based decision making for better outcomes.

Our mission is to harness the power of information to facilitate evidence-based decisions to improve people's lives.



Our offer

Main Services and Processes

INFORMATION MANAGEMENT

Information management is the cornerstone element of iMMAP Inc.'s expertise. We offer our partners the full spectrum of information management services, supporting them to provide cost-efficient, timely, and more effective assistance based on informed decision-making. Our cost-saving approach enables humanitarian aid and development organizations to reach more people and provide high quality assistance that impacts the wider population.





We collect, process, analyze, visualize, and distribute information to create knowledge that supports coordination efforts, informs interventions, and aids decision making.

Along with information value chains, iMMAP Inc. understands the importance of robust processes and systems to create, acquire, organize, store, distribute and use data and information to address unique needs and challenges.

With over 15 years of experience supporting humanitarian and development actors with data-related services, iMMAP Inc. has shaped its capacity to address the information management challenges of our partners through technical processes, tools, data handling, and analysis techniques that facilitate planning and response activities.

At iMMAP Inc., we continually seek innovative solutions and new technologies to ensure new digital pathways and methodologies are included in our technical processes, creating value for our partners and ensuring they can benefit from exhaustive, accurate, and cost-effective approaches across the whole information management spectrum.

Processes

-  Data Collection
-  Data Management
-  Data Visualization
-  Information Systems Development
-  Process Digitization
-  Geoinformatics Services



Data Management Cycle



DATA COLLECTION

Our expertise in remote and on the ground support, collecting data, and managing field teams, ensures that data collection requirements of our partners are met. Through our wide network, iMMAP Inc. leverages partnerships with not-for-profit and private organizations, academia, research institutes, and other entities to carry out data collection efforts, including in hard-to-reach areas.

We ensure timely, accurate, and reliable data through multiple collection methods.



FIELD DATA COLLECTION

iMMAP Inc.'s integrated workflow draws on decades of field experience and expertise from software engineers, sectoral experts, web developers, data scientists, statisticians, field enumerators, and researchers. We ensure timely, accurate, and reliable data through multiple collection methods, including the provision of survey and assessment design services, training, and data collection activities.

The iMMAP Inc. team specializes in data collection and verification services, including developing appropriate methodologies for needs assessments, baseline surveys, community-based assessments, third party evaluations, impact, and emergency surveys, landmine impact surveys, post-crisis assessments, and M&E services. We directly conduct and/or support data collection activities, disseminating data and information and providing controlled access based on security and confidentiality needs.

REMOTE DATA COLLECTION

iMMAP Inc. develops innovative, tailored solutions for our partners' data collection needs, facilitating prompt and detailed information that supports the delivery of data-driven aid services.

Examples of these capacities include mass internet surveys, mobile application data collection, remote sensing capabilities, Global Positioning Systems (GPS) technology, crowdsourcing, participatory mapping, and social media.

All these data collection and aggregation processes are complemented by modeling, allowing for data samples to be turned into high-quality indicators to support data-led decisions.



DATA MANAGEMENT

Data quality helps our partners lay the groundwork for all data-driven outcomes. At iMMAP Inc., we focus on accuracy, completeness, consistency, timeliness, and accessibility of data. Our data management and infrastructure practices create quality data for our partners, providing insights that help them streamline processes, improve services, and boost their impact through better data security, organization, and efficiency.

We promote data management that combines multiple sources to create a broad and complete view of the organization or specific operations, finding answers to the most complex questions.

Our services help our partners operationalize their data and regularly evaluate what data and key analytics processes serve their work. We support partners to streamline, manage, and automate the entire process, from data storage, data verification, triangulation, and aggregation, to statistical analysis, data visualization and analysis, and its operational application.

We focus on accuracy,
completeness,
consistency, timeliness
and accessibility of data.



DATA VISUALIZATION

Data visualization is a core component of iMMAP Inc.'s information management expertise. Our specialists create and provide regular information products to support our partners' operations, including reports, infographics, static and dynamic dashboards, web and mapping, among other visualization and design methods.

Through compelling visual representations, we translate complex data into comprehensive information.

Data visualization and maps often illuminate key data trends and relationships that are otherwise hidden in numbers and text. Through compelling visual representations, we translate complex data into comprehensive information for an audience of specialists and non-specialists, facilitating situational awareness and the identification of trends and linkages.

iMMAP Inc.'s cartography, graphic design, and data visualization experts employ spatial representation and design principles to present situational and operational information in meaningful and actionable formats.



INFORMATION SYSTEM DEVELOPMENT

iMMAP Inc. addresses our partner's digital challenges by designing, developing, and maintaining information systems and infrastructure solutions tailored to their specific needs in support of remote management, monitoring and reporting processes, coordination hubs, control centers, and knowledge management digital stations.

We aim to improve our partners' digital workplace through software solutions and systems that are modular, fully customizable, and easily integrated with existing tools, encouraging data sharing and collaboration.



Advantages

We have a team of experts from complementary backgrounds - engineers, programmers, developers, and designers, among others, with vast experience in product integration and development, who create digital tools suitable for your target audience and adapt to your organizations' demands by applying the technological solutions that offer the best value for money, bringing the following benefits:

- Time optimization
- Faster implementation
- Increased impact
- Information centralization
- Enhanced information management procedures
- Improved user experience
- Efficient internal and external communications

Information System Process



We offer end-to-end development products through completing the following stages:

Formulation - concept
- building - testing -
launching - maintenance

- Define the features and minimum viable product requirements
- Design concept
- Identify infrastructure requirements
- Identify software and software requirements
- Identify design requirements
- Building the system through agile practices
- Conducting several types of tests, including stress testing and security testing
- Launching the system and conducting feedback analysis
- Maintenance and fine tuning

PROCESS DIGITIZATION

We advise, support, and accompany partners through the change management cycle that seeks to transform internal data management systems and procedures into fully digital and automated processes by utilizing technology that creates more efficient and actionable information flows.



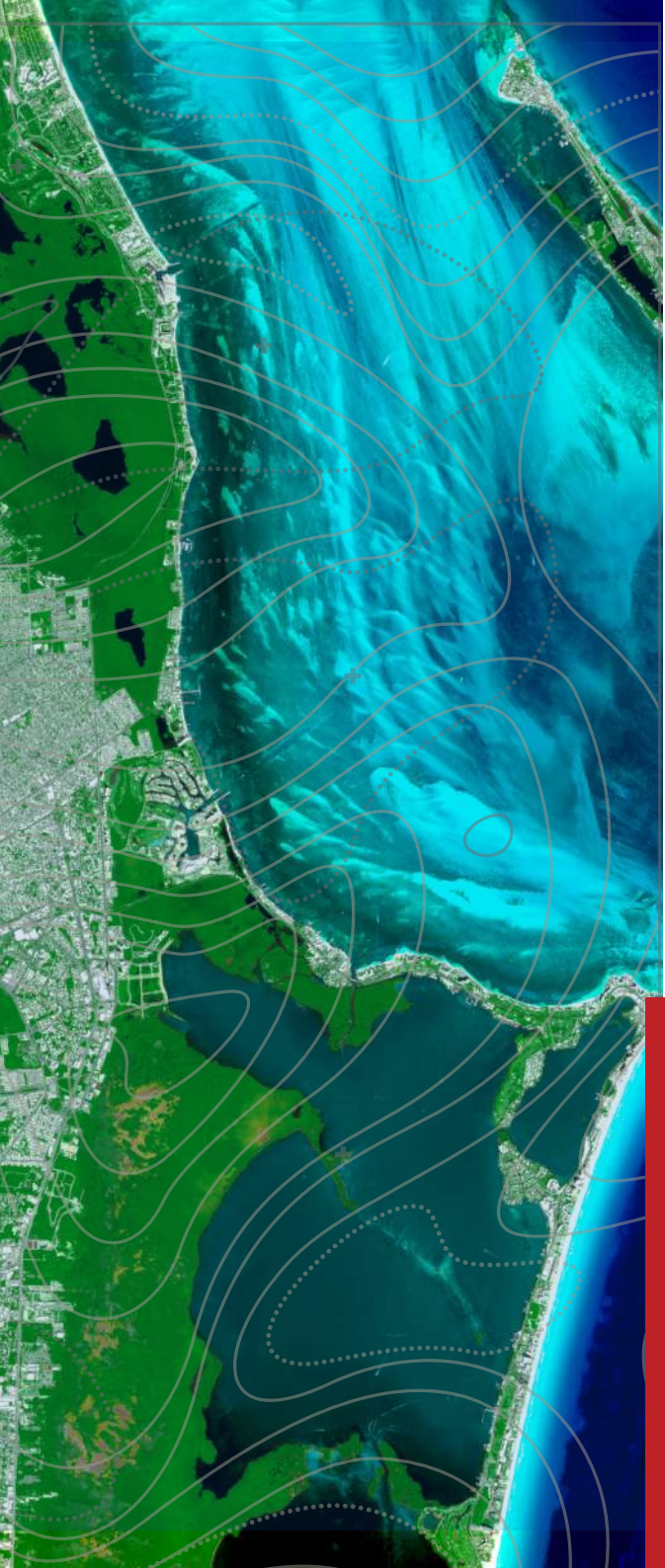
GEOINFORMATICS SERVICES

Geoinformatics enable us to develop, manage, analyze, and visualize our partner's operational data, helping them reach a broad understanding of any humanitarian or development context.

Our Geoinformatics services help partners identify complex problems, understand trends, patterns, and relationships, monitor and forecast change, and focus on intelligible ways of presenting data geographically to help better plan and implement emergency and development interventions on the ground.

iMMAP Inc.'s professional spatial experts visualize and analyze aid activities data that involve the understanding of location-based information related to the main areas of focus of relief organizations, including Disaster Risk Reduction (DRR), climate change, natural resources, agriculture, urban profiling, population movements, disaster response, people in need and the severity of needs, food security, livelihoods, health, and water, sanitation and hygiene (WASH), among other thematic areas.





For many years, iMMAP Inc. has been leveraging Geoinformatics techniques to support our partners with the following insights:

- **Identify complex problems** – Visualizing geographical data allows us to identify relationships and linkages that create complex humanitarian issues.
- **Understand trends** – Conducting geospatial analysis to interpret patterns and relationships that provide a clear picture to support aid operations.
- **Monitor change** – Tracking climate and environmental change over time, their main driving factors, such as precipitations, drought, or conflict, and facilitate adequate long-term food security interventions.
- **Forecast and respond to natural disasters** – Delivering real-time situational awareness on floods, avalanches, tropical storms, landslides.
- **Set response priorities** – Analyzing multiple factors and patterns to help our partners identify target areas and assign adequate response measures.

ANALYSIS

iMMAP Inc. is a leading independent provider of objective, in-depth, evidence-based analysis for organizations operating in development contexts, situations of violence, post-disaster, and conflict recovery.

We provide the complete package of advanced analysis services, from groundbreaking advanced geospatial analysis to extensive secondary data review and analysis tailored to the needs of our partners. This analysis supports evidence-based decision-making by our partners in humanitarian and development contexts, and ultimately improves the impact and effectiveness of data-driven services to communities in need of aid.

By making sense of data and providing key actors with a clearer picture, iMMAP Inc.'s analysis contributes to strengthening decisions related to planning and implementing emergency and development interventions on the ground.

iMMAP Inc. also provides information management training that increases the capabilities of humanitarian and development actors to perform analysis. This approach contributes to the sustainability of our activities in the long-term while strengthening local expertise.



Processes



Advanced Geospatial Analysis



Context Analysis



Situation Analysis



Secondary Data Analysis



Thematic Analysis



Monitoring and Evaluation



ADVANCED GEOSPATIAL ANALYSIS

iMAP Inc. produces advanced geospatial analytics through the acquisition, storage, management, analysis, and visualization of geospatial information.

The cornerstone of the iMAP Inc. geospatial offering includes technologies such as Geographic Information Systems (GIS), Remote Sensing and Open Data Cubes, and activities such as thematic mapping, geospatial statistics, geodatabase management, and training. These are designed, formulated, and developed by our dedicated geoinformatics units and geographic information experts, and presented through interactive web-based geospatial platforms that focus on the

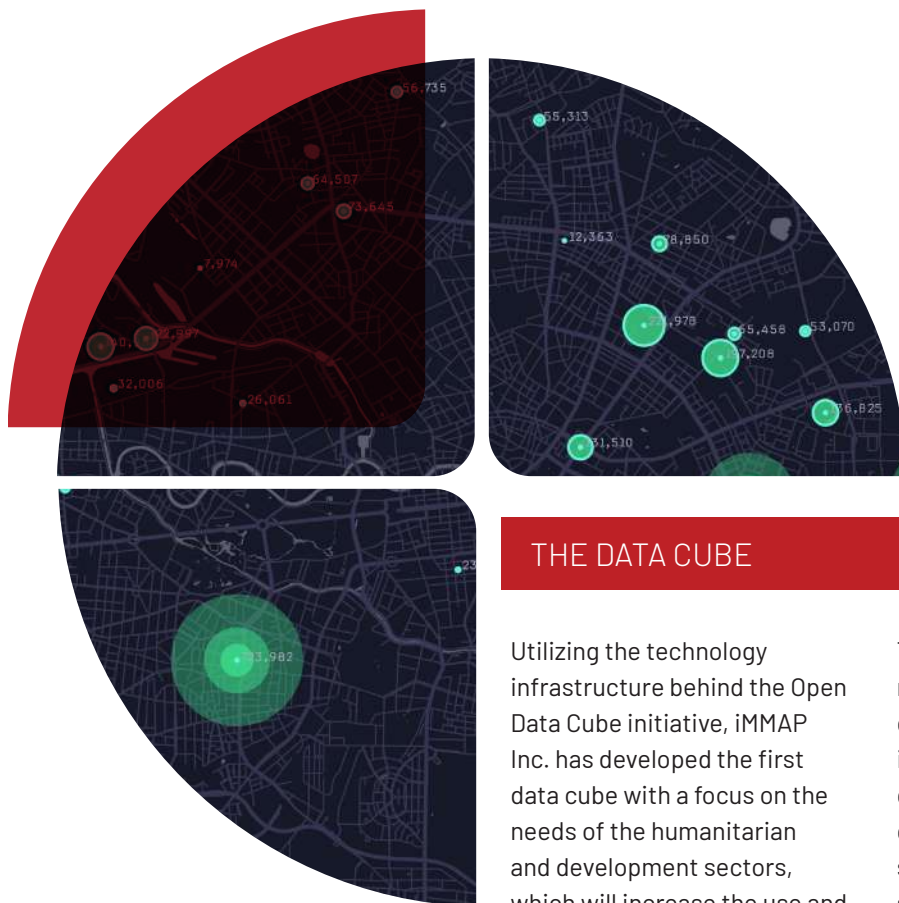
needs of the humanitarian and development actors.

Our experts apply computational, visual, analytical, artificial intelligence (AI), machine learning (ML) and statistical methods to process and understand large geospatial and temporal data to help address complex social and environmental challenges. In doing so, we support our partners to understand phenomena and identify trends that include intricate relationships between people and places.

We work closely with our partners to strengthen their geospatial analysis capacities, particularly in crisis-affected, recovery, and reconstruction contexts where resources are limited and geospatial data is often sparse

and inaccurate. This includes direct support for specialized tasks, the deployment of experts, and the development of tailor-made products for organizations in need of geospatial analysis services to help guide humanitarian and development projects and programs while maximizing the use of those resources for the highest possible impact.

Our expertise in geospatial analysis, coupled with extensive knowledge and experience of humanitarian and development settings, uniquely positions iMAP Inc. to continue improving the impact and effectiveness of data-driven efforts to save lives and alleviate human suffering and poverty, now and into the future.



THE DATA CUBE

Utilizing the technology infrastructure behind the Open Data Cube initiative, iMMAP Inc. has developed the first data cube with a focus on the needs of the humanitarian and development sectors, which will increase the use and impact of earth observation data, supporting different aid actors with On-Demand Analysis Ready Data and Information, as well as supporting the UN Sustainable Development Goals (SDG) through indicators such as Land Degradation (SDG 15.3.1), Urban Profiling (SDG 11.3.1) and Water Resource (SDG 6.6.1) assessments.

Together with the advances made in machine learning, data mining, and computing infrastructures, the cube will be capable of managing big data queries and rapidly yield time-series analysis of extensive satellite data archives spanning as far back as 1987.

The infrastructure behind the cube allows both technical and non-technical users to access earth observation information, eliminating technical barriers such as data access, data preparation, lack of analyses tools, and limited software and hardware resources.



CONTEXT ANALYSIS

Humanitarian and development interventions need to be context relevant. Context analysis, therefore, plays a key role in enabling humanitarian and development actors to understand and operate in environments that are often characterized by complexity, instability, and insecurity.

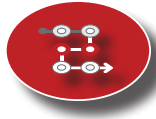
From primary data collection to analysis and reporting, the full spectrum of information management is crucial for efficient and effective context analysis. Our expertise in information management places iMMAP Inc. in an ideal position to provide reliable contextual analysis that draws from multiple sources to produce granular information to inform

programming while taking into account the greater context. iMMAP Inc. provides its partners with a holistic and comprehensive contextual analysis of the areas in which their interventions occur, allowing them to understand better the socio-cultural, political, economic, and geographic factors that give rise to a crisis and will either hamper or enable their response. This analysis is shared through context update reporting that focuses on recent and ongoing developments that impact stabilization and humanitarian programming. These reports provide partners with diagnostic and predictive analysis to better understand changes and emerging

challenges in their operational environment and help them navigate these challenges.

A structured context analysis can contribute to prioritizing interventions and potential programmatic entry points while also informing project design, implementation, and the monitoring and evaluation framework. iMMAP Inc.'s context analysis facilitates a more holistic understanding of the inter-relationships between needs, their root causes, and underlying vulnerabilities. It allows for a more targeted response in development contexts, situations of violence, post-disaster, and conflict recovery.





SITUATION ANALYSIS



iMAP Inc. conducts collaborative situation analysis across multiple countries using intelligent web-based platforms tailored towards humanitarian crisis responses.

Our situation analysis services strengthen the information flow available to humanitarian actors to enable a better response to different crises by making information available to all decision-makers in any specific country, at any specific time, for any specific humanitarian thematic area. We aim to improve evidence-based decision-making and strengthen assessment and analysis capacities in countries

affected by humanitarian crises and the COVID-19 pandemic by addressing data and information comprehensiveness, consistency, and value challenges.

iMAP Inc. collects and analyzes data provided by humanitarian stakeholders and other relevant actors to generate comprehensive secondary data review of reports, assessments, and research papers, among other sources. This is followed by the production and dissemination of situational analysis reports. These analytical reports provide response actors with a thorough analysis of

the impact of a crisis on the people affected, facilitating a better understanding of the situation. Partners can then use this information to help inform planning and target response operations.

iMAP Inc. situation analysis services also aim to strengthen cluster members and its leadership, as well as the humanitarian coordination capacity by utilizing existing mechanisms at the country level and supporting multi-stakeholder information sharing.



SECONDARY DATA ANALYSIS

iMMAP Inc. conducts large-scale secondary data analysis through the Data Entry and Exploration Platform (DEEP), developed by Data Friendly Space (DFS), an organization specialized in secondary data review and analysis.

Secondary data review builds upon a desk review process of all relevant information available from different sources after a rigorous data collation, synthesis, and analysis process is conducted. iMMAP Inc.'s secondary analysis is defined by the logic that the severity of the crisis, the type, scope, scale of problems, and risks the affected population face

can be estimated or projected with a reasonable degree of accuracy by following a systematic multidisciplinary approach.

iMMAP Inc. generates extensive secondary data reviews of the reports, assessments, and research papers available at the field level to provide humanitarian actors with a thorough and tailored secondary analysis, while providing lessons learned and guidance for ongoing and future assessments and programming globally. iMMAP Inc.'s secondary analysis provides the right information, to the right people, at the right time.



**iMMAP Inc.
generates
secondary data
reviews and
provides extensive
and tailored
analysis.**



Thematic Analysis

URBAN ANALYSIS

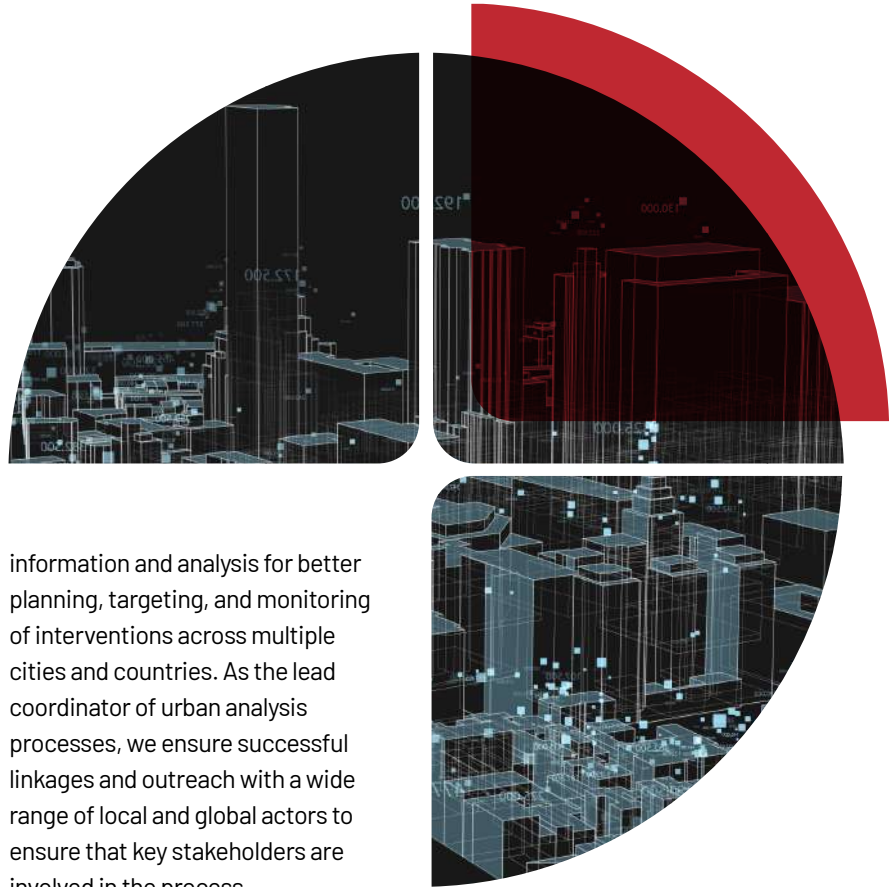
iMAP Inc.'s analysis expertise includes extensive experience in urban analysis, which focuses on understanding the spatial differentiation and organization of demographic, social, and economic processes shaping cities. Through different capacities, we contribute to a high-standard, holistic, and people-centered urban analysis of crises at the city and neighborhood levels to enable effective planning and response.

iMAP Inc. brings together expertise in urban analysis and information management, which is formulated through an inclusive approach that contributes to urban

information and analysis for better planning, targeting, and monitoring of interventions across multiple cities and countries. As the lead coordinator of urban analysis processes, we ensure successful linkages and outreach with a wide range of local and global actors to ensure that key stakeholders are involved in the process.

Through our expertise in area-based analysis, urban profiling and planning, in-depth analysis products, cohesive urban information management systems, and national urban recovery and reconstruction strategies, iMAP Inc. enables its partners to

make informed decisions that ultimately provide high-quality targeted assistance to vulnerable urban populations. We also work to strengthen the capabilities of organizations with limited capacity in spatial analysis for urban development.





Thematic Analysis

FOOD SECURITY AND LIVELIHOOD ANALYSIS

We utilize quantitative and qualitative research techniques to collect and analyze the full range of food security and livelihood (FSL) indicators, agriculture and natural resource-based livelihood indicators, and socio-economic vulnerability indicators to inform development and humanitarian partners in FSL restoration interventions.

iMMAP Inc. conducts study on agriculture and non-agriculture driven market systems to evaluate the performance from supply and demand sides, highlighting bottlenecks and potential opportunities

for interventions. Several methodologies are applied for this purpose, including Emergency Market Mapping Analysis (EMMA), Supply Chain Assessment, Value Chain Analysis, Market Functionality Assessment and Market Actor and Facilities Mapping, and Integrated Price (food, agriculture inputs) Monitoring Initiatives.

iMMAP Inc. performs impact evaluations by measuring FSL project progression and performance to assess whether project implementation aligns with project management plans



and objectives. FSL program monitoring and evaluations highlight the relevancy, effectiveness, efficiency, impact and sustainability of FSL projects in emergency, early recovery, and development sectors.



Thematic Analysis

HEALTH ANALYSIS

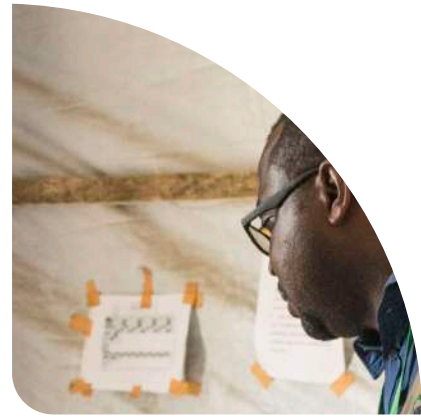
Development of global tools and standards on Public Health Information Services (PHIS) aiming to standardize and support public health information functions at national and sub-national levels.

iMMAP Inc. supports the Health Cluster in the setup, implementation, and development of mechanisms to collect and analyze data on affected populations' health status and risks, health system performance, and health resources availability. Cross-analyzing and identifying insights from the multiple PHIS enables health clusters to better identify needs, develop and

implement responses, and adapt activities according to contextual changes.

iMMAP Inc. additionally supports health clusters on producing and analyzing Health Sector people in need and severity figures for the annual Humanitarian Needs Overview.

Public Health
Information
Services
provide timely
and reliable





Thematic Analysis

PROTECTION ANALYSIS

Protection is key and needs to be mainstreamed in all responses. This is even more true in regions where several Human Rights abuses are reported. IMAP supports Protection clusters as well as in the national Child Protection (CP), Gender Based Violence (GBV) Areas of Responsibilities (AoRs) and Housing, Land and Property Working Group (HLPWG) to amplify their coordination capacities. iMMAP Inc. produces regular humanitarian situation reports through analysis and review activities on the different areas of the humanitarian intervention, participating in the overall monitoring of the humanitarian situation and needs.





MONITORING AND EVALUATION

iMAP Inc.'s monitoring and evaluation (M&E) services support adequate project planning and implementation to ensure the efficiency of interventions. We support the strategic needs of our partners through processes aimed at improving program design, tracking program quality, evaluating the impact of the interventions, ensuring accountability with stakeholders, and enabling a learning environment within our partner organization.

Our M&E services facilitate the identification, formulation and tracking of the most precise

and impactful set of indicators, allowing transparent program implementation and generating learning processes that increase the effectiveness, efficiency and impact of future projects, strengthening knowledge management practices of our partners.

Through the correct formulation and implementation of monitoring and evaluation (M&E) mechanisms across the whole project cycle, we facilitate increased accountability towards all stakeholders, including donors, partners and beneficiaries.





Third-Party Monitoring

Through Third-Party Monitoring (TPM) processes, iMMAP Inc. regularly monitors and verifies activities conducted by implementing partners (IPs) to ensure the accuracy of reports submitted and uphold compliance with donor regulations and project deliverables. Our TPM services verify the activities and achievements of IPs while increasing the understanding of the social and economic benefits of the tracked programs.

We apply a participatory approach in monitoring and evaluation (M&E) combined with real-time evaluations (RTEs) on IP activities to support timely decision-making and enhance result-based management (RBM). Indicators are monitored and evaluated on a regular basis while the data gathered from IP activities is collated, analyzed and visualized to produce analytical information that is reported to relevant stakeholders. The TPM activities include field visits to task sites in order to closely monitor, verify and evaluate the processes and products while ensuring the quality, safety and environmental management systems of IPs.

CAPACITY STRENGTHENING

Developing the abilities of technical and non-technical stakeholders in information management is fundamental to increasing the impact of data in the delivery of humanitarian and development aid services.

iMAP Inc. is committed to ensuring the sustainability and continuity of information management practices in the humanitarian and development sectors. We leverage our extensive capacity strengthening expertise through tailored programs that empower stakeholders and national entities to understand and apply the principles and best practices of information management in the aid context.

Our workshops are designed for those aiming to harness the power of data to drive positive program outcomes. We help partners leverage the main opportunities and understand the key challenges of processing and managing data to support evidence-based interventions through our information management and analysis-related workshops.





IMMAP

Better Data
Better Decisions
Better Outcomes

www.immap.org | nigeria@immap.org

Processes



Data Literacy



Internship Program



Training and Webinars



DATA LITERACY

We support humanitarian and development stakeholders to acquire the ability to read, understand, analyze, create, and communicate data as information through identifying, gathering, and assembling resources, and developing content that supports partners in learning the key processes involved in the data management cycle.





INTERNSHIP PROGRAM

iMMAP Inc. establishes internship programs throughout its countries of operations, where recent university graduates are hired as interns, trained, mentored and prepared for future employment in the field of data and information management with partner organizations.

The key purpose of this program is to build national capacity by recruiting interns for a specific period of three to six months, providing them with hands-on practical training on information management practices, and familiarizing them with the different levels and concepts of the information management cycle.





TRAINING AND WEBINARS

We tailor training packages and curricula to support specific needs and interests, including data management, assessment and survey, humanitarian access and safety, geospatial analysis, as well as tool and service-focused modules. Training and capacity strengthening activities are provided at both organizational and multi-organizational levels (clusters, NGO forum, and others). They are designed and delivered to enable sustainable information management (IM) and evidence-based decision-making.

iMMAP Inc. offers a variety of training packages and delivery modalities, which include general

and advanced information management training, as well as specific, tailor-made training packages aimed at supporting the unique needs of humanitarian and development stakeholders, such as IM and data officers, data visualization officers, M&E personnel, program managers, and decision-makers who understand the importance of robust information systems and wish to learn how to leverage the power of data and information for improved services and enhanced accountability to donors and beneficiaries.

Trainings are customized for various levels of experience and

expertise. General information management training sessions are available to provide general skills and knowledge of the topic. Advanced information management training is available for database managers and GIS specialists to enhance the use of new technologies and improve the coordination process. Mentoring programs provide support in the development and implementation of specific information systems. iMMAP Inc. builds the capacity of partners that seek to reach a proficient use of relevant information management and analysis software, including but not limited to ODK, KoBo Collect, XLF Forms, Adobe Suit, Tableau,



■ Dashboard Creation

THEMATIC AREAS INFORMATION MANAGEMENT TRAINING MODULES

Information management carries a cross-cutting function within any organizational and multi-organizational structure. iMMAP Inc. offers multiple training modules on specific sectors and thematic areas, including but not limited to:

- Health and Public Health Information Systems
- Food Security and Livelihood Analysis
- Urban Analysis
- Protection
- Gender-Based Violence
- WASH
- Education
- Disaster Risk Reduction

GENERAL TRAINING

- Humanitarian IM
- Coordinated Needs Assessments
- Secondary data analysis
- Primary Data Collection
- Data Preparation and Analysis
- Data Mapping
- Data Visualization

ADVANCED/ SPECIALIZED IM TRAINING

- Data Visualization & Data Processing/ Dashboard Creation
- Business Intelligence Applications and Dashboard Creation
- Business Intelligence Applications and Dashboard Creation
- Introduction to ArcGIS/QGIS and Hands-on Mapping in ArcGIS/QGIS
- Hands-on Custom Styling in ArcMap/ QGIS: practical exercise



Our thematic expertise



TECHNICAL COORDINATION

Working with the United Nations Office for the Coordination of Humanitarian Affairs (OCHA), providing information management services that support the coordination of humanitarian responses.

iMMAP Inc. has a permanent membership in key global coordination bodies, such as the Global Health Cluster, Global WASH Cluster, Global Nutrition Cluster and Global Food Security Cluster.



POPULATION MONITORING

Monitoring and assessing the situation of internally displaced persons (IDPs), returnees and host communities through multiple primary and secondary data collection methods, including regular household surveys at village-level, the use of satellite imagery, social media, artificial intelligence, and crowdsourcing data collection, allowing a comparative needs analysis across different population groups.



iMMAP Inc.'s thematic services ensure cross-sectoral linkages that enhance coordination and high-quality service delivery to beneficiaries



HEALTH

Providing the World Health Organization (WHO) and Health Cluster partners with high quality information management services to improve rapid response to public health emergencies. Our support includes mapping and GIS services, data management and visualization, humanitarian health IM coordination, training and tailored software to meet the needs of leading humanitarian responders.



URBAN PROFILING

Delivering urban profiling and area-based analysis to facilitate the development of a commonly agreed evidence base to inform the search for durable solutions targeting local communities, internally displaced people (IDPs) and refugees.



NUTRITION

Supporting partners to safeguard and improve the nutritional status of emergency-affected populations by delivering a wide range of information management activities that ensure an appropriate response that is timely, effective and at scale. Our information services provide insights into populations' overall living conditions and welfare, helping track progress of a population over time



DISASTER RISK REDUCTION

Supporting Disaster Risk Reduction (DRR) with information management services that build capacity, facilitate coordination, and enhance preparedness and response operations, aiming to assist our partners to make progress towards achieving the goals of the Sendai Framework for Disaster Risk Reduction.



FOOD SECURITY AND LIVELIHOOD

Promoting coordination of cluster/sector agencies in multiple countries by consolidating data from all partners, ensuring an inclusive and holistic framework that can be used to gain a better understanding of the linkages, trade-offs, and synergies that can create the space for achieving desired outcomes related to diets, income, health, and nutrition.



WATER, SANITATION AND HYGIENE (WASH)

As a member of the Global WASH Cluster and the WASH Field Support Team Consortium, and through a Long-Term Agreement (LTA) with UNICEF, iMMAP Inc. supports the WASH Sector with information management services that build capacity, facilitate coordination and enhance WASH interventions across different world regions.

Our thematic expertise



PROTECTION

Providing information management support to partners aiming to reduce and prevent people's exposure to risks. Services include gathering information from sector partners and government authorities, identifying gaps in operations implementation, formulating solutions for information collection, collation, analysis and sharing, as well as the timely development and generation of information products to inform interventions.



HUMANITARIAN MINE ACTION

iMAP Inc.'s expertise in coordination, capacity strengthening, and management of operational data (collection, visualization, and analysis) aids Humanitarian Mine Action actors in the identification and prioritization of areas in need of assistance and improves coordination efforts, supporting our partners to manage landmine and explosive remnants of war (ERW) mitigation activities.

Partner with us

What are your challenges?

- ✓ Does your team need to gain further data gathering, analysis and visualization skills?
- ✓ Would you like to leverage the latest technology innovations in remote data collection and save money?
- ✓ Does your organization require advance geospatial analysis that can support decision making for intervention during a global pandemic with multiple access constrains?
- ✓ Are you looking for maps and data collection processes that achieve more granularity and accuracy than ever before?
- ✓ Are you looking for a multidisciplinary approach to context analysis that can help you understand the economic, social and political dynamics of a country or region where you operate?
- ✓ Do you need an information management system to optimize all data-related aspects of a specific project or department within your organization?
- ✓ Do you think that leveraging remote sensing and geographic information systems will make your work more cost-efficient?

iMMAP Inc. can support your organization through a wide range of services aimed at solving all those challenges, and more. Our services range from specific packages that include information management, analysis, and/or capacity strengthening activities, to tailor-made, modular packages adapted to the specific needs of your team.

Do you want to know more?

Get in touch with us to have a conversation on how we can best support your needs!

After an initial meeting, iMMAP Inc. will conduct an assessment and diagnosis of your systems, information management procedures, data structure, and specific learning needs.

We can develop a services package that is accurately targeted to your needs, flexible, modular and adaptable, which can be adjusted and scaled while safeguarding the quality and relevance of our services, and the positive impact of the outcomes they generate.

Contact us at info@immap.org



How do we work?

- We provide **direct support** through strategies and solutions that support organizational and inter-organizational specific needs.
- We work on a **project basis** through cooperative agreements and direct grant support that ensures the delivery of targeted services.
- iMMAP Inc. also takes part in **multi-actor partnerships**, including consortiums, NGO forums, and other initiatives, which allow us to create synergies that drive high-quality information management, analysis, and digital capacity services in the development and humanitarian sectors.
- iMMAP Inc. maintains a **roster** of expert, rapidly deployable information management, capacity strengthening, and technical analysis specialists that provide surge capacity support to partner organizations.
- Through our **extensive network of partnerships**, we ensure all data collection, analysis, training, and information management needs are met through a combination of our own capacity and the thematic expertise of our partners, including satellite imagery providers, high-tech startups, research institutions, and other service providers specialized in different capacities, **bringing the latest technologies already at work in the private sector into the humanitarian and development spheres.**
- Through our field experience and understanding of the **context** on the ground, iMMAP Inc. connects with civil society organizations (CSO), aiming to transfer knowledge and best practices through **localization initiatives** that support climate resilience and humanitarian, development, and peacebuilding linkages (triple nexus).

