

The Afghanistan Spatial Data Center -ASDC is a web-based geospatial platform, developed by iMMAP, that provides critical information to humanitarian organizations and government bodies for DRR, operations planning, emergency response, and M&E.

The ASDC monitors natural hazards such as floods, avalanches, earthquakes and landslides, and it provides information on humanitarian access, security incidents, and travel time and distance to hospitals, airports and urban areas.

The ASDC allows users to automatically produce interactive dashboards and maps with all the data needed to design proposals and reports, and plan emergency response operations.

REPORTHUB - HUMANITARIAN COORDINATION AND REPORTING SUPPORT

ReportHub is an online reporting platform, developed by iMMAP, that addresses the gap in reporting operational data across organizations by streamlining the information flow between clusters, partners and the humanitarian country team -HCT in support of the Humanitarian Response Plan -HRP.

ReportHub is currently the main reporting tool used by all humanitarian clusters active in Afghanistan, as endorsed by the Humanitarian Country Team.

CAPACITY STRENGTHENING

Through iMMAP internship program, specialized training and workshops, and knowledge sharing activities, we have addressed critical issues and provided key solutions to some of the main information challenges experienced by the humanitarian community in Afghanistan.

iMMAP is committed to empower humanitarian stakeholders and national capacities to reach professional understanding of the principles and best practices of information management in the humanitarian context.

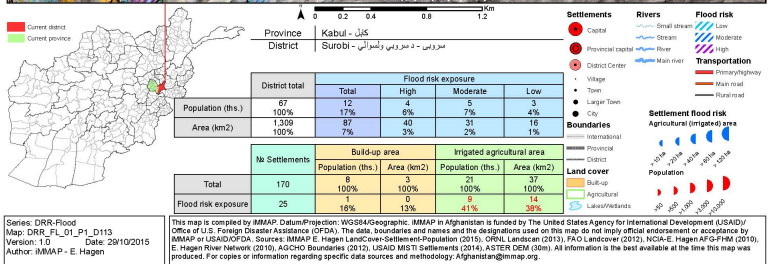
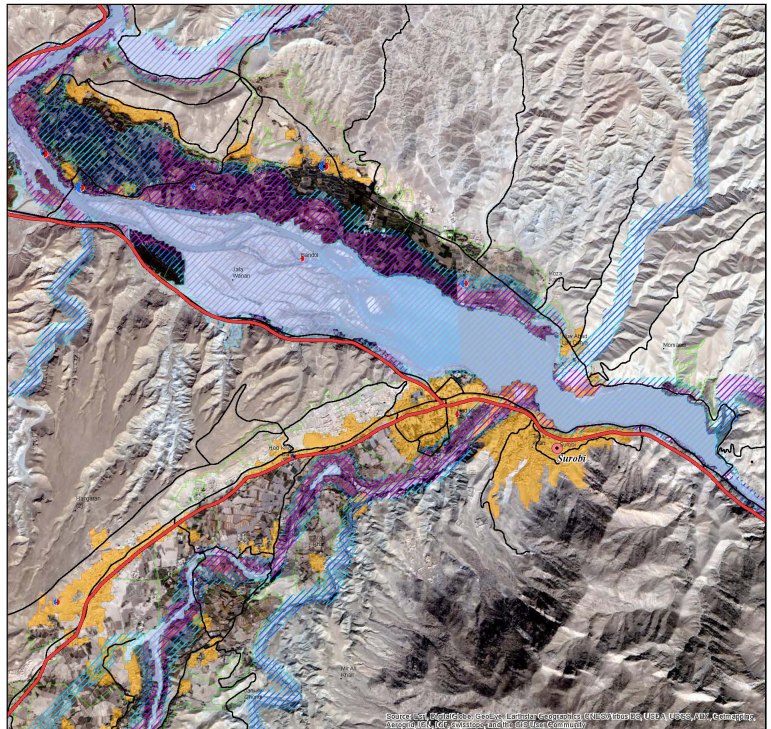


Surobi Town Flood Risk Exposure

Kabul - Surobi

کابل - سروبی

کابل - د سروبي ولسوالي



This map is compiled by iMMAP. Data/Projection: WGS84/Geographic. iMMAP in Afghanistan is funded by The United States Agency for International Development (USAID)/Office of U.S. Foreign Disaster Assistance (OFDA). The data, boundaries and names and the designations used on this map do not imply official endorsement or acceptance by iMMAP or USAID/OFDA. Sources: iMMAP E. Hagen Lands/cover-Settlements-Population (2013), OFNL Landscan (2013), FAO Landscover (2012), NCIA-E. Hagen AF-G-FRM (2010), E. Hagen River Network (2010), AISC/Geo Boundaries (2010), USAID/MSI Settlements (2010), ASTER DSM (2009). All information is the best available at the time this map was produced. For copies or information regarding specific data sources and methodology: Afghanistan@immap.org.



Better DATA

Improve data quality, collection and timeliness to stimulate sharing and coordination



Better DECISIONS

Analyze and visualize data to support better decision making



Better OUTCOMES

Maximize program outcomes and make a difference

iMMAP's services have facilitated informed and effective disaster risk management, emergency response, and development activities by enabling evidence-based decision-making for cluster/sector leads, critical NGO, and government operations. iMMAP's goal is to alleviate the suffering of victims of natural disasters and armed conflicts by providing the humanitarian community with a decision-making service through the provision of recent, reliable and appropriate geographical and strategic information.