

Information Management for Emergency Response in Afghanistan (IMERA)



Afghanistan is one of the world's most complex humanitarian emergencies

Characterized by prolonged and escalating conflict

Causng over **one million people** to be living in new and prolonged **displacement**

6.3 million people in need of life-saving assistance in 2019

Source: HNO 2019

iMMAP Afghanistan

Funded by USAID OFDA, iMMAP has been actively operating in Afghanistan since 2010.

iMMAP delivers information management (IM) products and services to key partners in humanitarian response and Disaster Risk Reduction, including humanitarian clusters, USAID OFDA implementing partners (IPs), OCHA, the Afghan Government, and civil society.

We work towards ensuring that data consistency and standardization is integrated into all systems for a more efficient and cost-effective emergency response by all humanitarian actors.

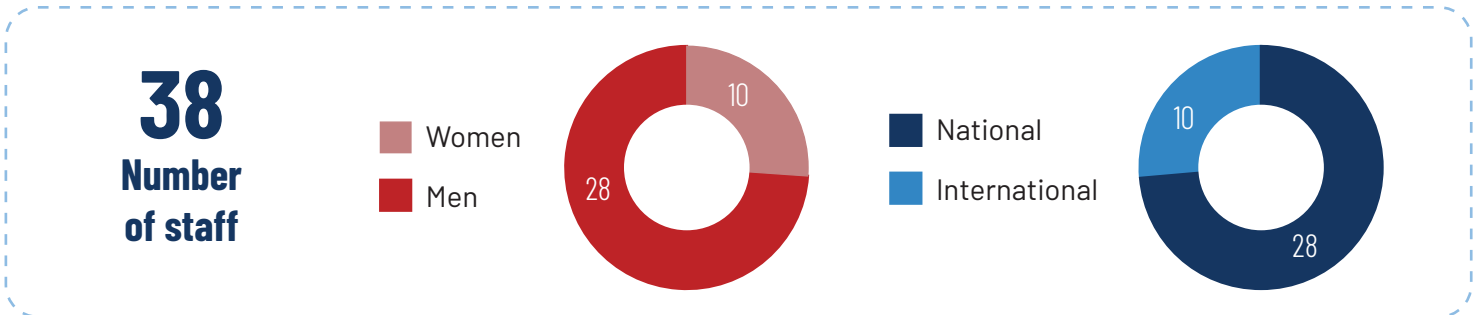
Years of presence in Afghanistan: **Since 2010**

Donor: **USAID OFDA**

Current project: **Information Management for Emergency Response in Afghanistan (IMERA)**

Project budget: **\$3,000,000**

Number of partners iMMAP currently supports: **69**



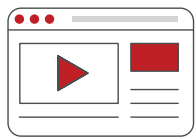
Services



Information Management Services:

iMMAP provides IM support for humanitarian clusters through dedicated

Stand-by Partnership Program deployments to the Shelter Cluster, Health Cluster, and Nutrition Cluster, as well as additional, on demand, IM support for specialized tasks from our in-country iMMAP program team.



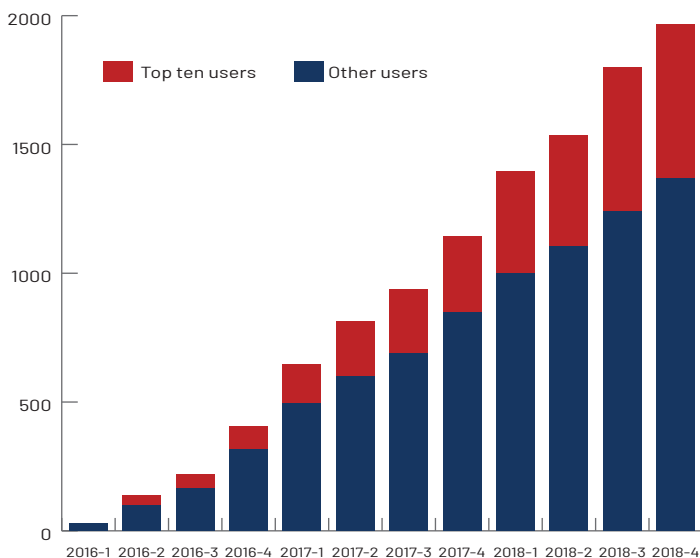
ASDC: The Afghanistan Spatial Data Center (ASDC) is a geospatial platform that provides critical information to

humanitarian organizations and government bodies for DRR, operations planning, emergency response, and M&E. Users can automatically produce updated interactive dashboards and maps.



The ASDC monitors natural hazards such as floods, avalanches, earthquakes and landslides, and it provides information on humanitarian access, security incidents, and travel time and distance to hospitals, airports and urban areas.

ASDC user statistics by quarters 2016-2018



ReportHub: ReportHub is an online reporting platform that addresses the gap in reporting operational data across organizations by streamlining the information flow between clusters, partners and the Humanitarian Country Team (HCT) in support of the Humanitarian Response Plan (HRP).

ReportHub coverage by cluster / working group (number of partners)



9

Education in Emergency Working Group (EiEWG)



30

Emergency Shelter and NFI



30

Food Security and Agriculture Cluster (FSAC)



24

Health



17

Multi-Purpose Cash (MPC)



10

Nutrition



36

Protection



30

WASH

Capacity Building: Through our internship program, specialized training and workshops, and knowledge sharing activities, we empower humanitarian stakeholders and national capacities to reach a professional understanding of the principles and best practices of information management in the humanitarian context.

