

AFFECTED POPULATION



6,023

AFFECTED FAMILIES



42,191

AFFECTED PEOPLE



224

PEOPLE INJURED



204

FATALITIES



76

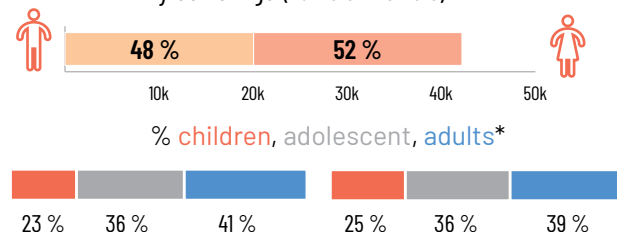
DISPLACED FAMILIES



460

DISPLACED PEOPLE

By Sex & Age (% Male / Female)



*Children (<5 years old), adolescent (5-17 years), adult (>18 years)

HEALTH



495

pregnant women



1,277

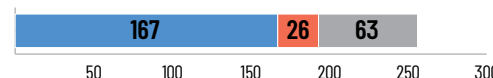
infants under 6 months



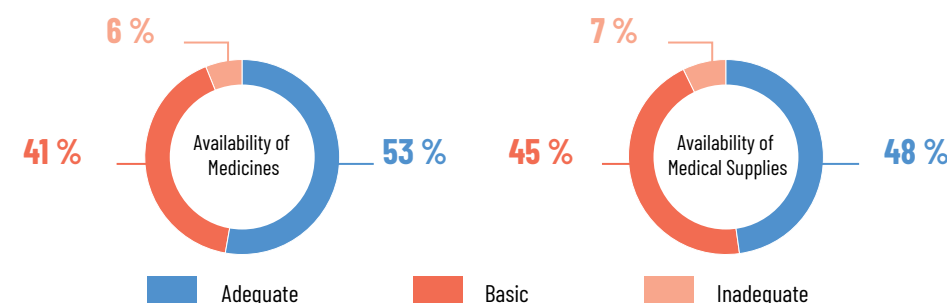
291

ambulances

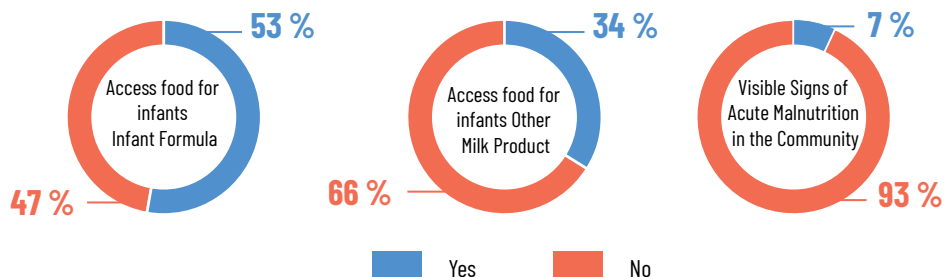
People Affected by Disease



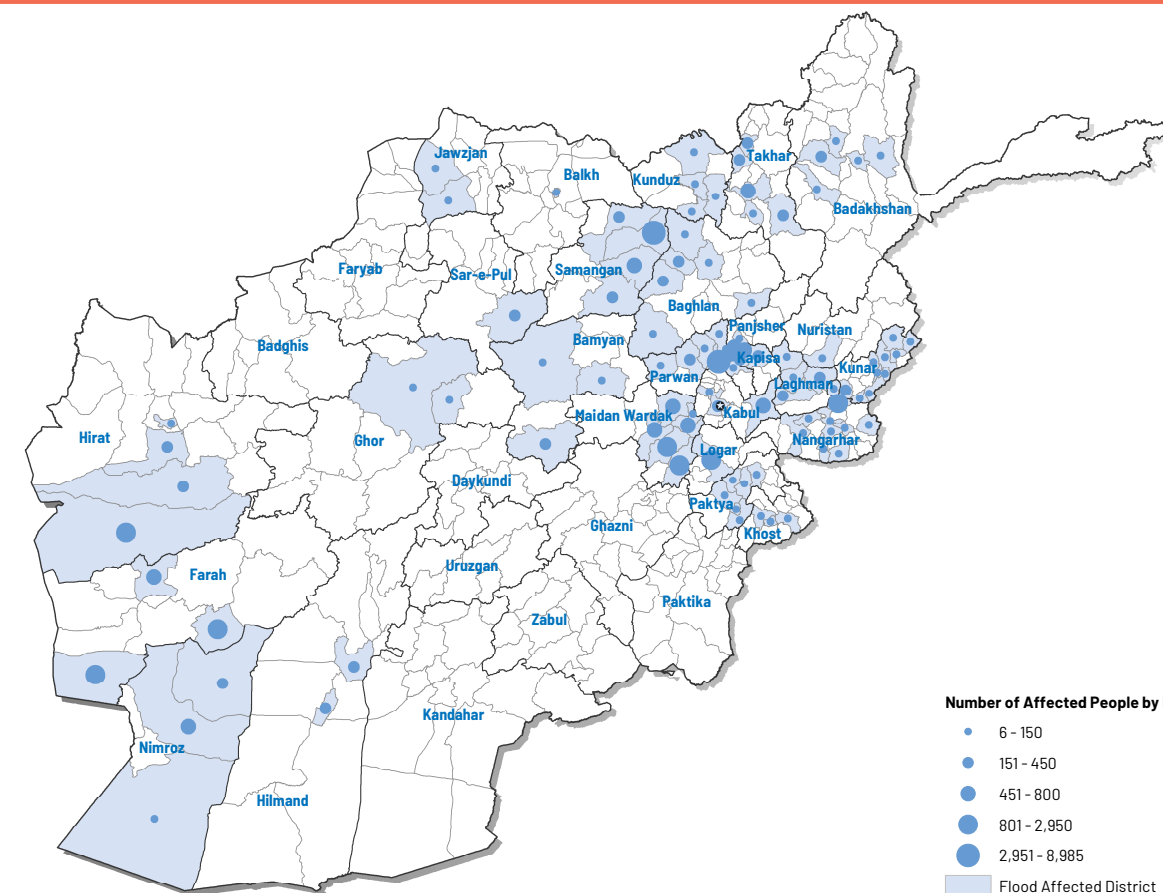
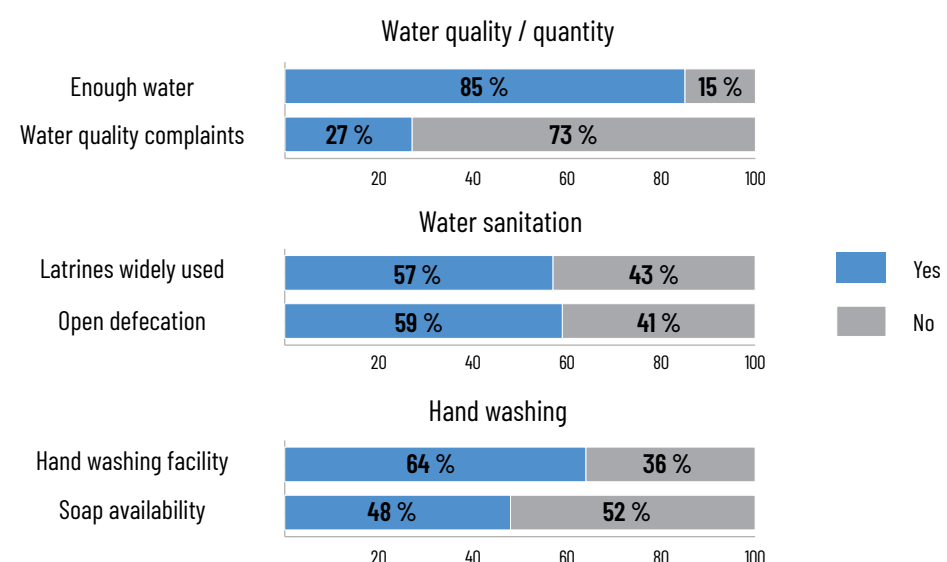
Diarrhea, Vomiting, Dehydration
Respiratory Infection
Trauma Cases



NUTRITION

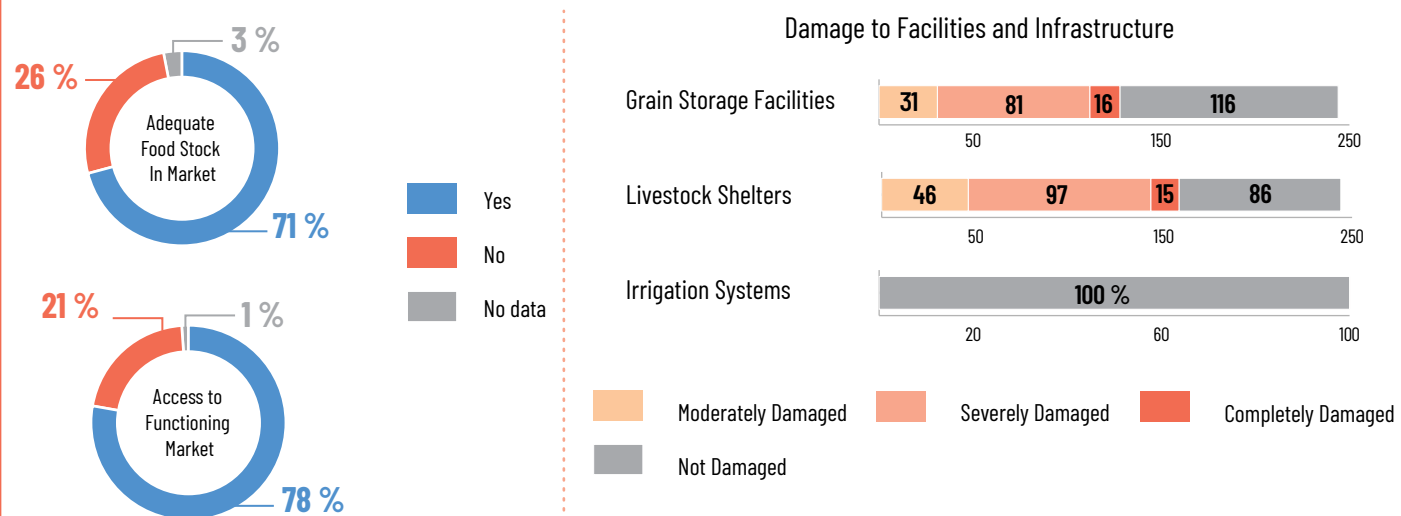


WASH



This dashboard is made possible by the generous support of the American people through the United States Agency for International Development (USAID). The boundaries, denominations, and designations displayed in this product are defined by the data shared with iMMAP. At iMMAP we visualize data, we do not create it, so these elements and freshness of the data are the responsibility of the data providers and no endorsement nor acceptance of it by iMMAP or USAID can be assumed. Population affected by natural hazards calculated according to Rapid Assessment Form (RAF).

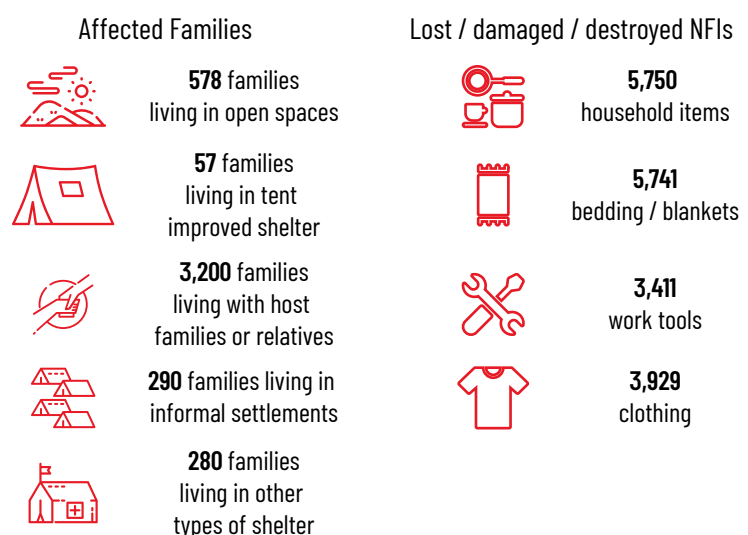
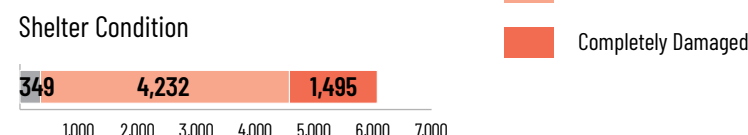
FOOD, LIVESTOCK, AND AGRICULTURE



ACCESS



SHELTER



PROTECTION

