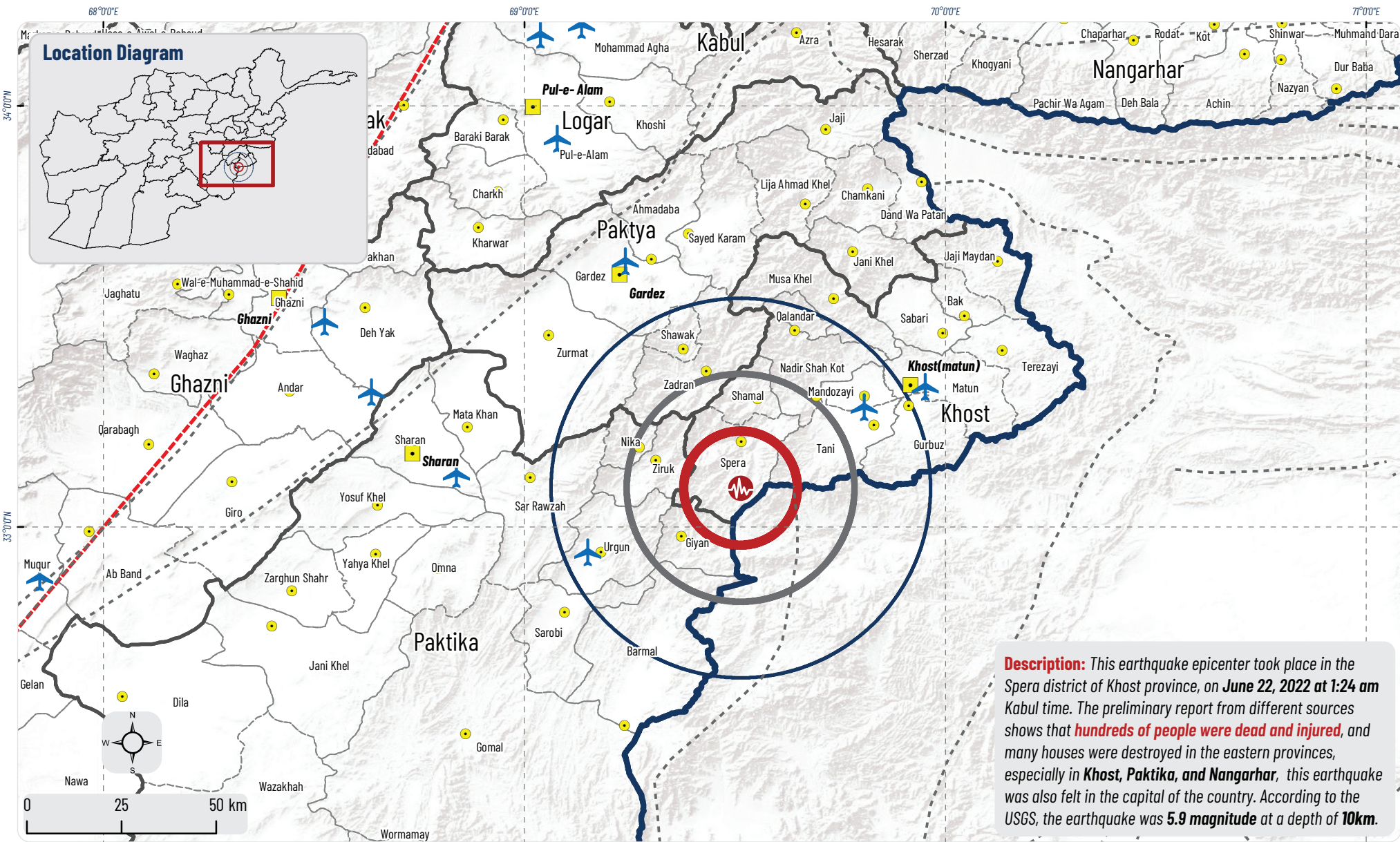
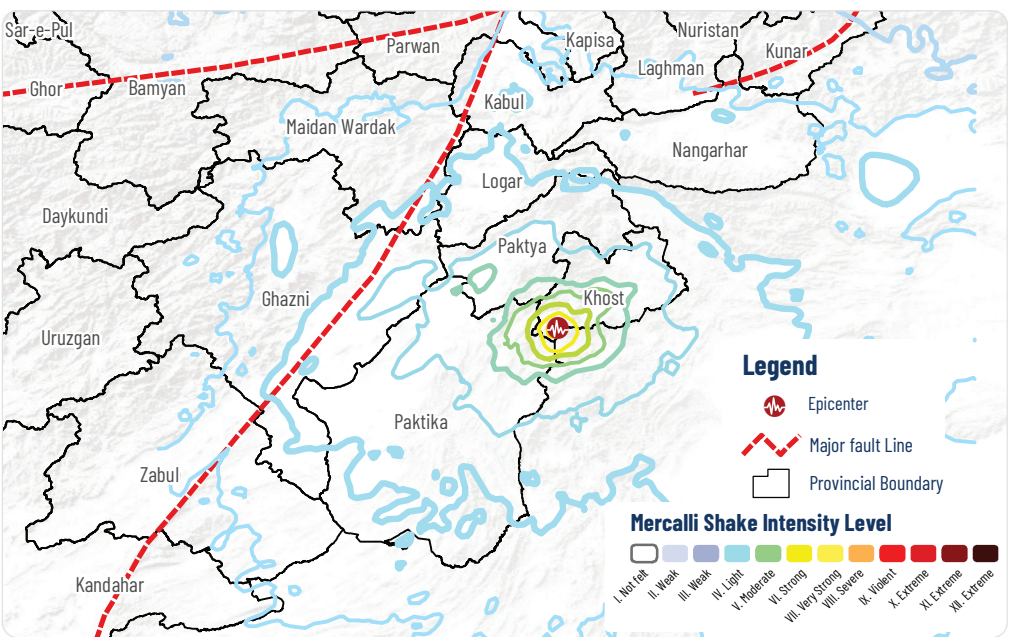


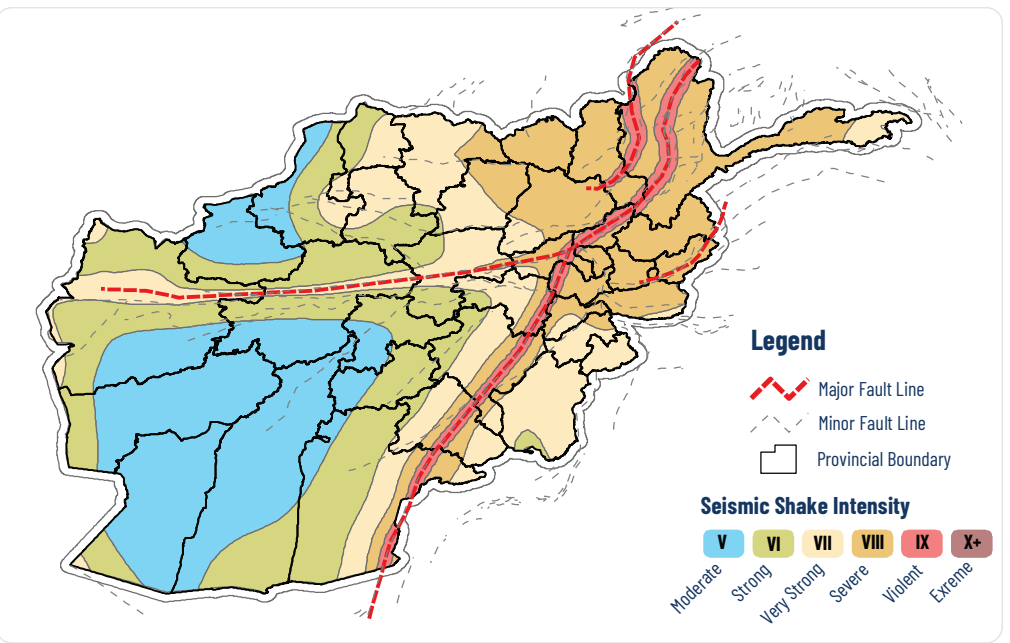
Afghanistan Earthquake: 5.9 Magnitude Spera District of Khost Province June 22, 2022



Earthquake Shake Intensity Scale



Afghanistan Shake Intensity



Earthquake Information

Magnitude: 5.9

Depth: 10 km

Date/Time: June 22, 2022 / 01:24:36 Kabul time

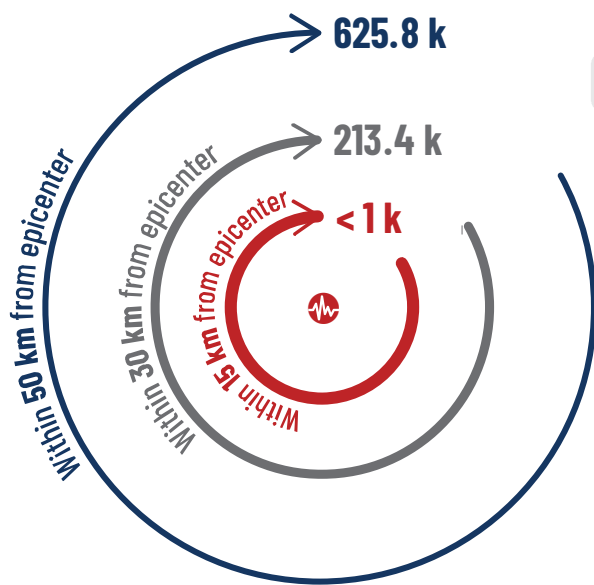
Location: 46 km SW of Khost Provincial Center (Matun)

Latitude: 33.092 N

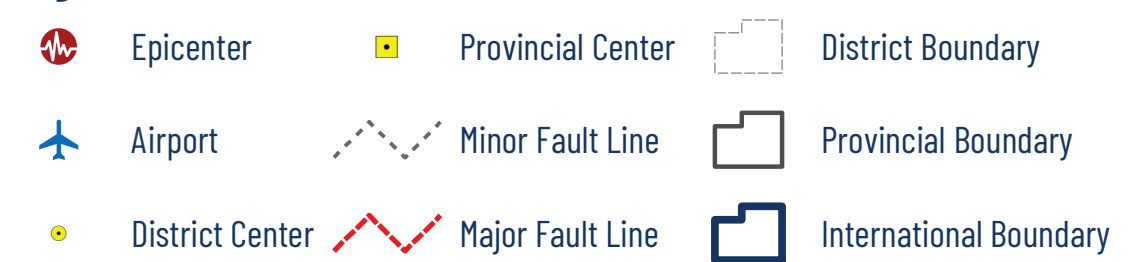
Longitude: 69.514 E



People Living in the Area



Legend



Description: This map displays information on an earthquake that recently took place in Afghanistan, one of the world's most seismically active countries. While it is impossible to prevent earthquakes, iMMAP is helping to inform the response when they occur, for instance through map such as this and the use of information technology tools.

Disclaimer: This map is made possible by the generous support of the American people through the United States Agency for International Development (USAID) - Bureau for Humanitarian Assistance (BHA). The boundaries, denominations, and designations displayed in this product are defined by the data shared with iMMAP. At iMMAP we visualize data, we do not create it, so these elements and freshness of the data are the responsibility of the data providers and no endorsement nor acceptance of it by iMMAP, USAID-BHA, or the United States Government can be assumed.

Feedback: rep-afghanistan@immap.org

Datum/Projection: WGS84/Geographic
Data Sources: USGS, MUDL, WorldPop
Produced By: iMMAP
Size: A3 (297 x 420 mm)
Date Created: June 22, 2022